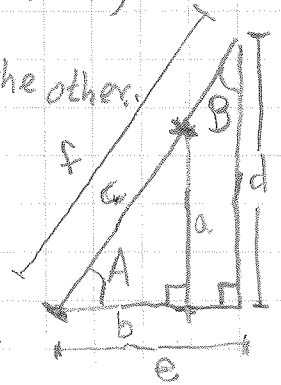
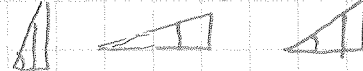


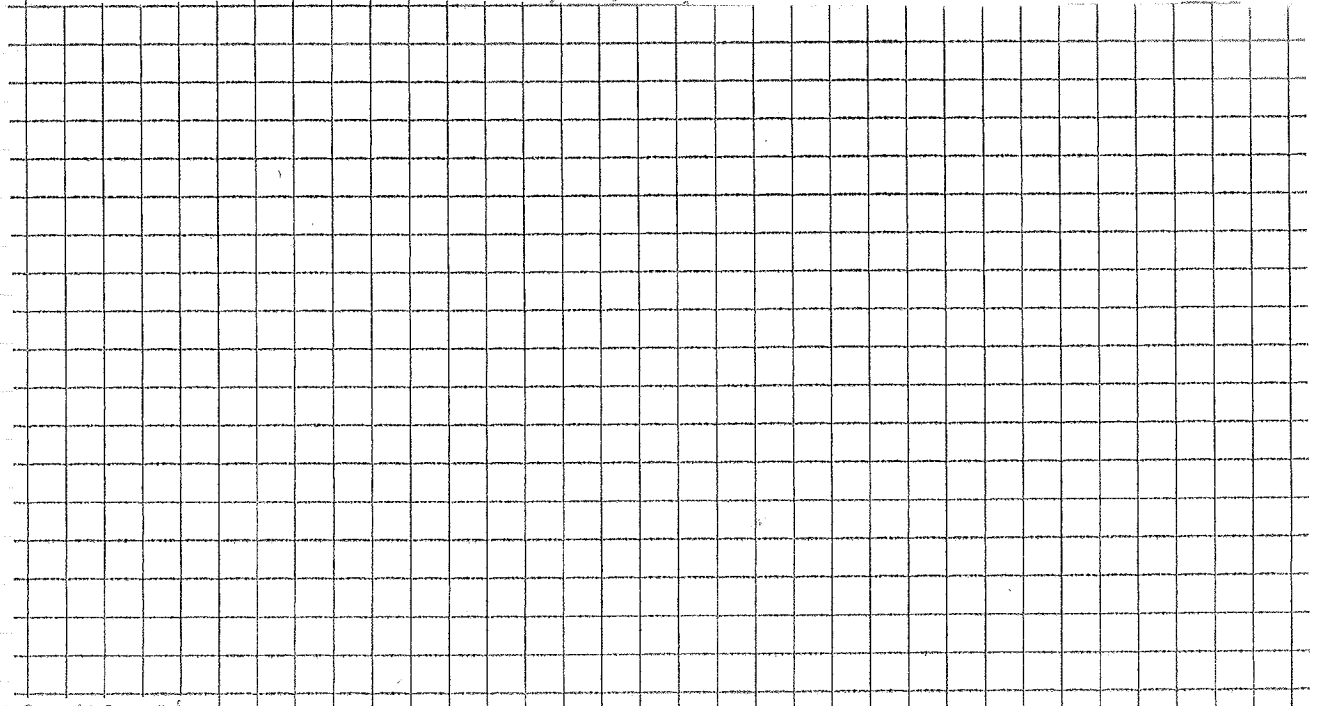
ANGLES & RATIOS OF RIGHT TRIANGLES

Use centimeters & degrees. (1cm = 10mm)

1. Draw two triangles: one stacked inside the other. They share a common angle A. You will be given the task to make A big, small or "medium" angle A.



2. Measure the sides a, b, c and d, e, f . (TO ONE DECIMAL)
3. Measure the angles A, B, C .



CENTIMETERS!

ONE DECIMAL

NO DECIMALS

TWO DECIMALS

NO DECIMALS

3 DECIMALS

FILL OUT LATER

Lengths	Squares	Ratios	Angles
a =	a ² =	$\frac{a}{c}$ =	A =
b =	b ² =	$\frac{b}{c}$ =	B =
c =	c ² =	$\frac{a}{b}$ =	C =
d =		$\frac{d}{f}$ =	
e =		$\frac{e}{f}$ =	
f =		$\frac{d}{e}$ =	

4. Look for patterns in each column.

5. Report A and a/c to the class.
6. Fill last column.